

# TECNA®

BALANCERS

## ESD PROTECTION



TECNA'S COMMITMENT WITH BALANCERS IS CONTINUOUS AND EVERGROWING

ANNOUNCING NEW PRODUCT LINE DEVELOPED FOR ELECTRONICS ASSEMBLY AND ESD-PROTECTION APPLICATIONS

### EPA - "ESD-PROTECTED AREA"

A special protection zone within the production

An ESD-protected zone (EPA) is an area in which electrostatic charges, which are often caused by static electricity, are prevented by using appropriate ESD-products.

This serves to protect against electrostatic discharge (ESD), which can damage or destroy sensitive electronic components.

Electrostatic protected areas, single ESD-workstations with the tools and equipment ESD-Safe are required in nearly the entire electronics- and semiconductor production.

### ARE THE SPRING BALANCERS YOU USE ESD-SAFE?

TECNA OFFERS A COMPLETE ESD-CERTIFIED PRODUCT LINE FROM RETRACTORS TO ZERO GRAVITY BALANCERS, UP TO 100KG LOAD CAPACITY



Certified according to  
**ESD-AKADEMIE®**  
ANSI/ESD S20.20  
IEC 61340-5-1

**THE PERFECT COMPANION FOR YOUR PCB  
THE PERFECT MATCH FOR YOUR TOOLS**

## TECNA RECOMMENDS

For ESD PROTECTED AREA (EPA), we often find an optimal choice with:

**9310ES÷9313ES**



	Aluminium
	1600 mm
	Stainless Steel
	0,2÷3 kg

**9320ES÷9323ES**

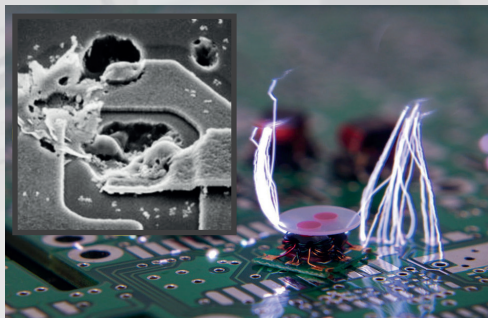


	Aluminium
	2000 mm
	Stainless Steel
	1÷8 kg

**9336LES÷9350ES**



	Aluminium
	2500 mm
	Stainless Steel
	0,5÷14 kg



### ESD DAMAGE IS MOSTLY INVISIBLE TO THE NAKED EYE

Each year, an estimated \$5 billion in losses from ESD damage occur in the electronics industry alone. Recurring ESD damage can be catastrophic from a business perspective. Businesses wind up spending more to replace equipment and component than they would on basic ESD preventative products.